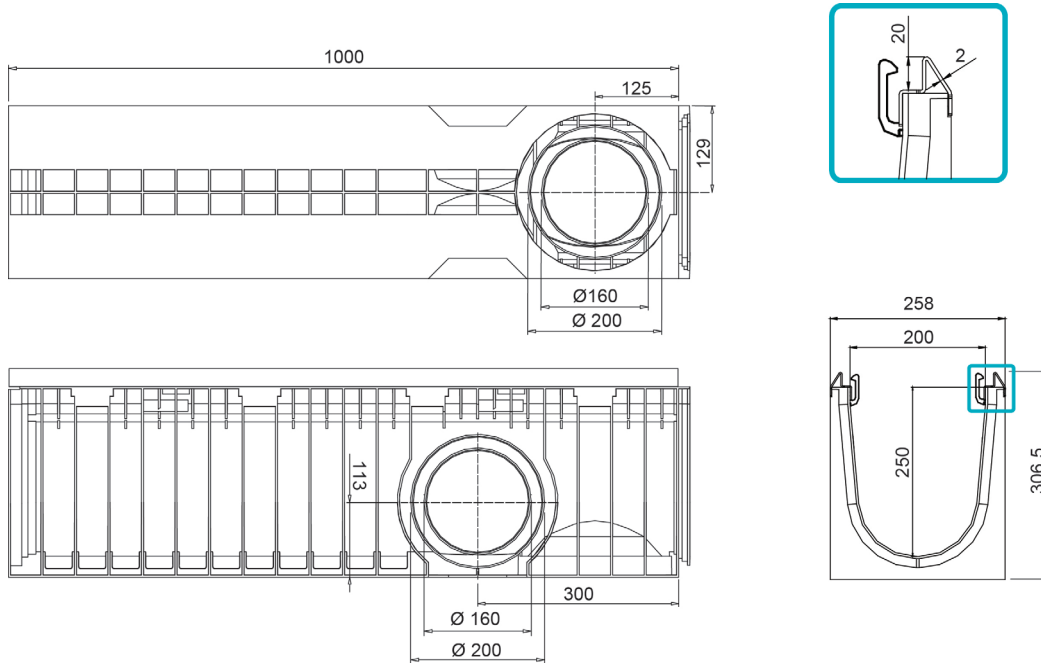




## HD-PE Channel SLOPE 200/250



Watertight: to ensure the watertight of the channels, it is advisable to use a bituminous sealing adhesive. As a complete and long lasting guarantee of the absence of leakages through the joints of the channels, it is possible to heat-weld the joints.

## Dimensions and features

N.B. Dimensions and weights are subjected to the normal tolerances of the manufacturing

Length (mm)	1000
External width (mm)	258
External high (mm)	306
Internal width (mm)	200
Internal height (mm)	250
Outlets	2x $\varnothing$ 200/160 (lateral), 1x $\varnothing$ 200/160 (bottom)
Material	HD-PE
Weight (Kg)	7.30
Drainage section (cm <sup>2</sup> )	430
Capacity (dm <sup>3</sup> = litri)	43

## Compatible Gratings

Slot 20 mm

Ductile Iron

Load class C250 - D400 - E600