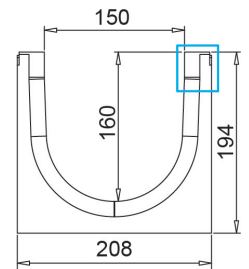
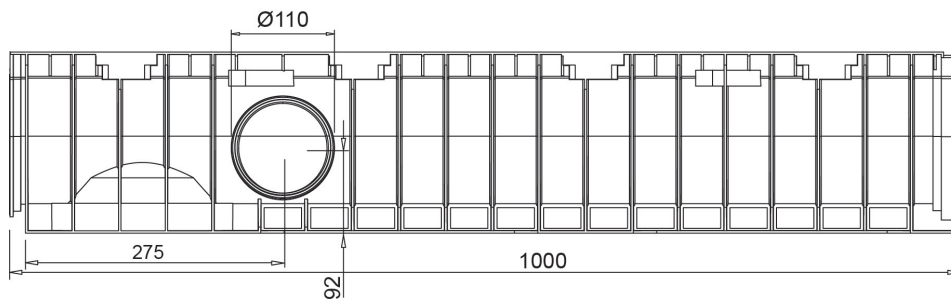
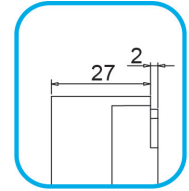
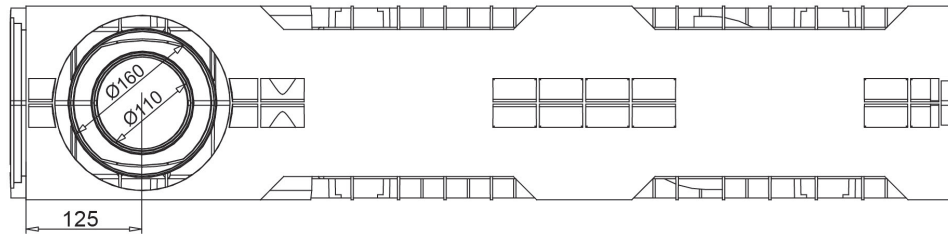




## HD-PE Channel EASY 150/160



Watertight: to ensure the watertight of the channels, it is advisable to use a bituminous sealing adhesive. As a complete and long lasting guarantee of the absence of leakages through the joints of the channels, it is possible to heat-weld the joints.

## Dimensions and features

N.B. Dimensions and weights are subjected to the normal tolerances of the manufacturing

|                                     |                                       |
|-------------------------------------|---------------------------------------|
| Length (mm)                         | 1000                                  |
| External width (mm)                 | 208                                   |
| External high (mm)                  | 194                                   |
| Internal width (mm)                 | 150                                   |
| Internal height (mm)                | 160                                   |
| Outlets                             | 2xØ110 (lateral), 1xØ110/160 (bottom) |
| Material                            | HD-PE                                 |
| Weight (Kg)                         | 2.85                                  |
| Drainage section (cm <sup>2</sup> ) | 213.04                                |
| Capacity (dm <sup>3</sup> = litri)  | 21.30                                 |

## Compatible Gratings

|                       |                                    |                 |
|-----------------------|------------------------------------|-----------------|
| Slotted               | Galvanized Steel / Stainless Steel | Load class A15  |
| Mesh 33x11            | Galvanized Steel / Stainless Steel | Load class B125 |
| Mesh 33x33            | Galvanized Steel / Stainless Steel | Load class B125 |
| Mesh                  | Ductile Iron                       | Load class B125 |
| Slot 13 mm            | Ductile Iron                       | Load class C250 |
| Longitudinal slot "T" | Galvanized Steel / Stainless Steel | Variable        |

The products have to be installed according to MufleSystem's specification (available on our web site)