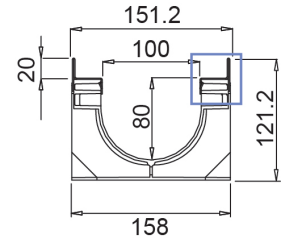
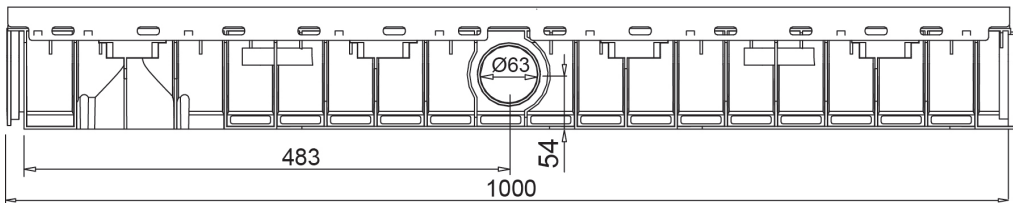
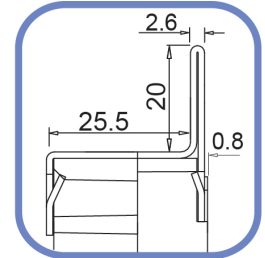
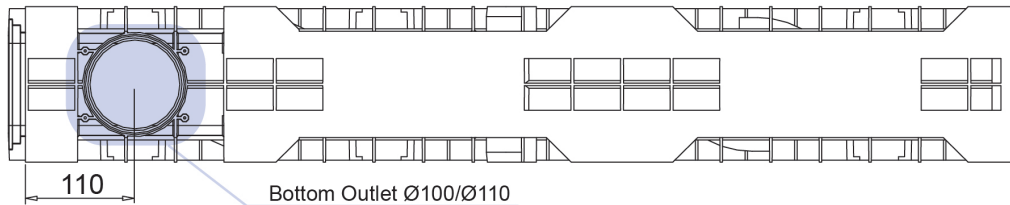




HD-PE Channel SMART 100/80



Watertight: to ensure the watertight of the channels, it is advisable to use a bituminous sealing adhesive. As a complete and long lasting guarantee of the absence of leakages through the joints of the channels, it is possible to heat-weld the joints.

Dimensions and features

N.B. Dimensions and weights are subjected to the normal tolerances of the manufacturing

Length (mm)	1000
External width (mm)	158
External high (mm)	120
Internal width (mm)	100
Internal height (mm)	80
Outlets	2xØ63 (lateral), KIT bottom outlet Ø100/110 (bottom)
Material	HD-PE
Weight (Kg)	3.30
Drainage section (cm ²)	69.28
Capacity (dm ³ = litri)	6.7

Compatible Gratings

Mesh 33x11	Galvanized Steel / Stainless Steel	Load class B125 - C250
Mesh 33x33	Galvanized Steel / Stainless Steel	Load class B125 - C250
Mesh	Ductile Iron	Load class B125 - C250
Slot 20 mm	Ductile Iron	Load class C250
Slot 6 mm	Ductile Iron	Load class C250