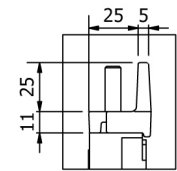
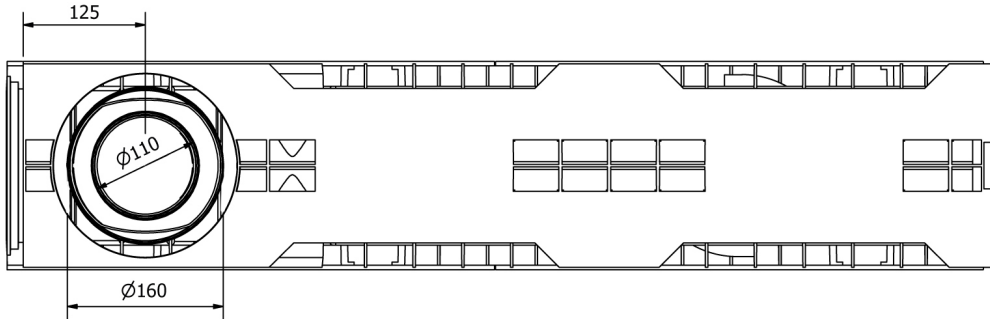
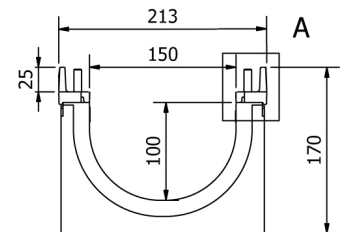
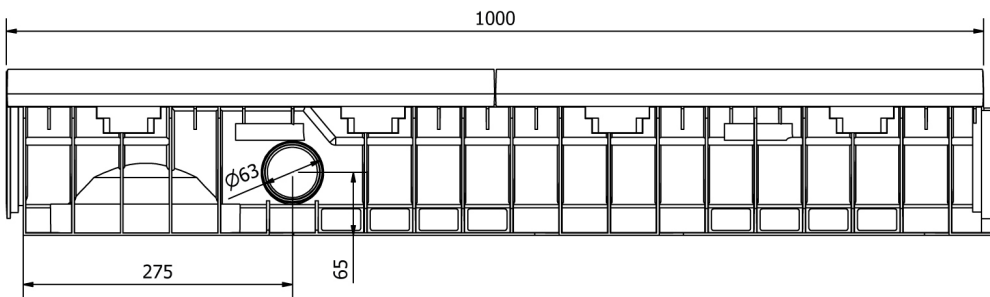




HD-PE Channel Wing G 150/100



DETAIL A



Watertight: to ensure the watertight of the channels, it is advisable to use a bituminous sealing adhesive. As a complete and long lasting guarantee of the absence of leakages through the joints of the channels, it is possible to heat-weld the joints.

Dimensions and features

N.B. Dimensions and weights are subjected to the normal tolerances of the manufacturing

Length (mm)	1000
External width (mm)	208
External high (mm)	161
Internal width (mm)	150
Internal height (mm)	100
Outlets	2xØ63 (lat.) / 1xØ110/160 (vert.)
Material	HD-PE
Frame material	Ductile iron
Weight (Kg)	9.3
Drainage section (cm ²)	127.32
Capacity (dm ³ = litri)	12.73

Compatible Gratings

Slot 20 mm

Ductile Iron

Load class D 400 - E 600 - F 900