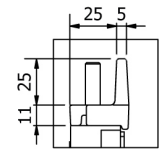
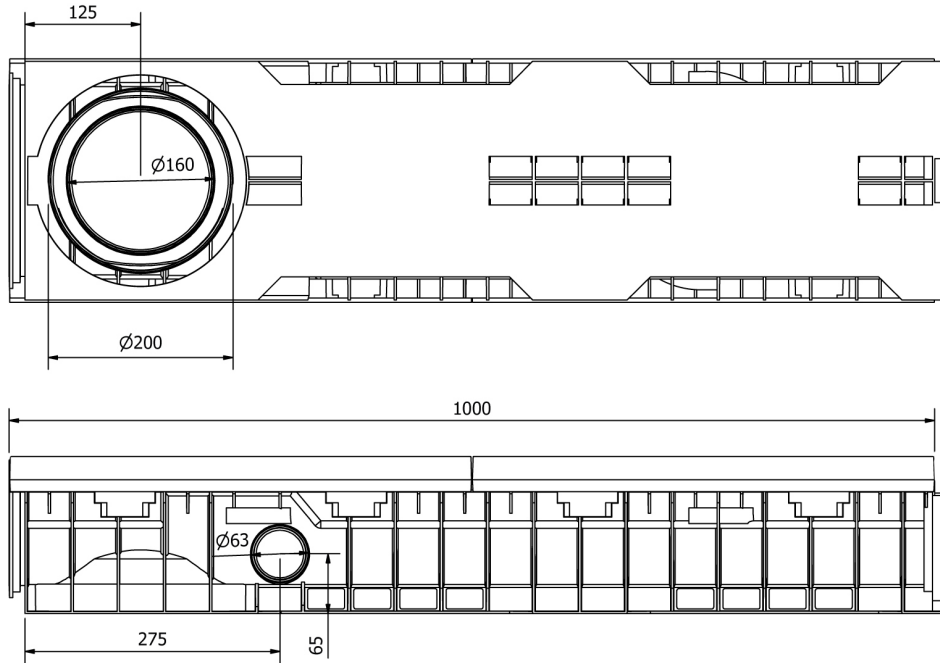
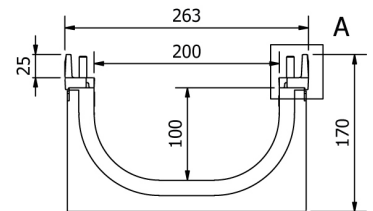




HD-PE Channel Wing G 200/100



DETAIL A



Watertight: to ensure the watertight of the channels, it is advisable to use a bituminous sealing adhesive. As a complete and long lasting guarantee of the absence of leakages through the joints of the channels, it is possible to heat-weld the joints.

Dimensions and features

N.B. Dimensions and weights are subjected to the normal tolerances of the manufacturing

Length (mm)	1000
External width (mm)	258
External high (mm)	161
Internal width (mm)	200
Internal height (mm)	100
Outlets	2x \varnothing 63 (lat.) / 1x \varnothing 160/200 (vert.)
Material	HD-PE
Frame material	Ductile iron
Weight (Kg)	9.6
Drainage section (cm ²)	178.73
Capacity (dm ³ = litri)	17.87

Compatible Gratings

Slot 20 mm	Ductile Iron	Load class D 400 - E 600 - F 900
Drainage asphalt	Ductile Iron	Load class D 400