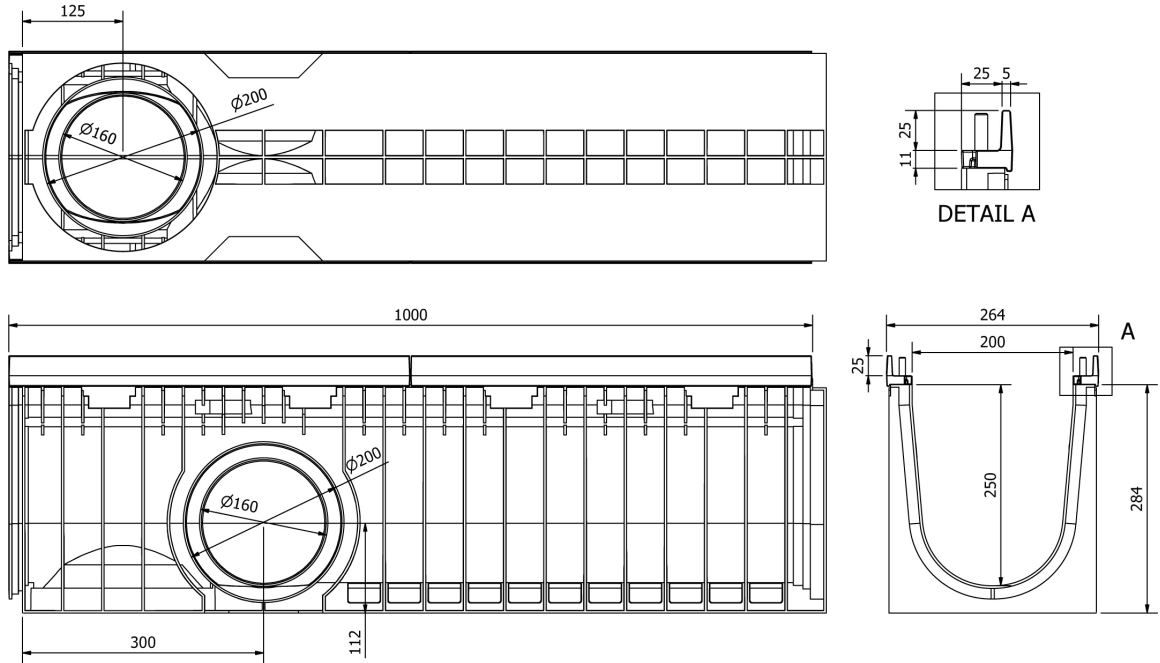




## HD-PE Channel Wing G 200/250



Watertight: to ensure the watertight of the channels, it is advisable to use a bituminous sealing adhesive. As a complete and long lasting guarantee of the absence of leakages through the joints of the channels, it is possible to heat-weld the joints.

## Dimensions and features

N.B. Dimensions and weights are subjected to the normal tolerances of the manufacturing

Length (mm)	1000
External width (mm)	258
External high (mm)	311
Internal width (mm)	200
Internal height (mm)	250
Outlets	2x $\varnothing$ 200/160 (lat.) / 1x $\varnothing$ 200/160 (vert.)
Material	HD-PE
Frame material	Ductile iron
Weight (Kg)	12
Drainage section (cm <sup>2</sup> )	430
Capacity (dm <sup>3</sup> = litri)	43

## Compatible Gratings

Slot 20 mm	Ductile Iron	Load class D 400 - E 600 - F 900
Drainage asphalt	Ductile Iron	Load class D 400