

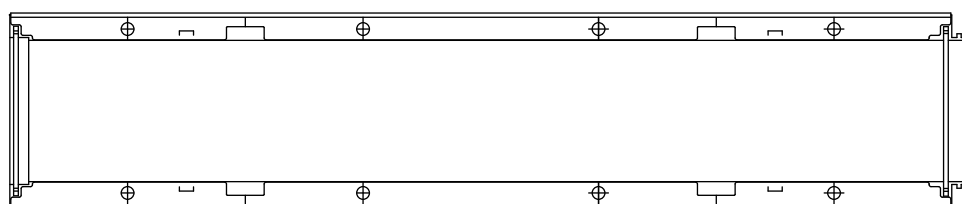
MUFLEDRAIN**WING****MUFLE**

SISTEMI DI CONDUZIONE DI ACQUA E LUCE

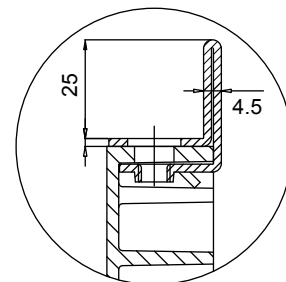
IGQ P026
UNI EN 1433Codice prodotto
503008 zincato
503009 (inox)

rev. 00

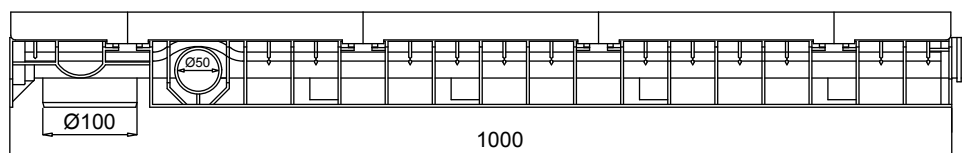
Canaletta in PE-HD WING 150/40 con telaio in acciaio zincato (o inox)



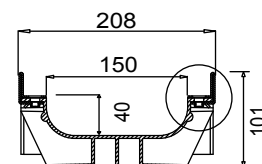
VISTA DALL'ALTO



PART. SEZIONE



VISTA FRONTALE



VISTA LATERALE

Il prodotto deve essere posto in opera secondo le specifiche della Mufle SpA, le istruzioni sono disponibili sul nostro sito internet.

Tenuta all'acqua: per assicurare la tenuta stagna delle canalette, si consiglia l'utilizzo di un adesivo sigillante bituminoso. A garanzia completa e duratura dell'assenza di perdite attraverso i giunti delle canalette, si può provvedere alla saldatura a caldo dei giunti stessi.

Scheda tecnica

Dimensioni e caratteristiche

NB: Le dimensioni ed i pesi sono soggetti alle normali tolleranze di fabbricazione

| | |
|------------------------------------|---|
| Lunghezza (mm) | 1000 |
| Larghezza esterna (mm) | 208 |
| Altezza esterna (mm) | 101 |
| Luce interna (mm) | 150 |
| Altezza interna (mm) | 40 |
| Scarichi | 1 x Ø 100 e 2 x Ø 50 |
| Materiale canaletta | PE-HD |
| Materiale telaio | Acciaio zincato (o inox) (spessore 2mm) |
| Peso (Kg) | 4.70 |
| Sezione di drenaggio (cmq) | 56.5 |
| Capacità (dm ³ = litri) | 5.65 |

Griglie

| | | |
|------------------------|--------------------------|----------------------------|
| Maglia guarda 30x30 | in acciaio zincato, inox | Classe B125-C250 |
| Maglia antitacco 30x10 | in acciaio zincato, inox | Classe B125-C250 |
| Fessura 20 mm | in ghisa sferoidale | Classe C250-D400-E600-F900 |
| Copertura cieca | in acciaio zincato | Classe C250 |
| Copertura cieca | in ghisa sferoidale | Classe E600 |
| Air System* | in ghisa sferoidale | Classe E600 |

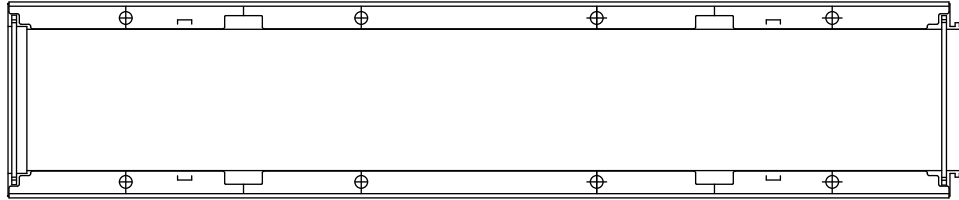
*copertura per compostaggio

Channel in HD-PE WING 150/40 with galvanized or stainless steel edge

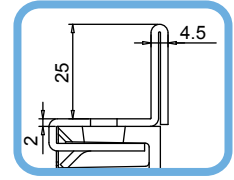


Code
Galvanized 503008
Stainless Steel 503009

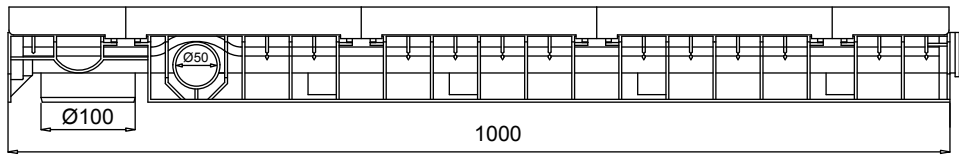
rev. 00



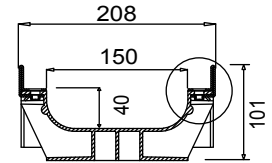
TOP VIEW



DETAIL SECTION



FRONT VIEW



LATERAL VIEW

New.

1. The new mufledrain channels can also be joined together with the gratings/covers already installed on in order to reduce installation times.
2. The new mufledrain channels have new fixing-to-channels systems, as the inner side HD-PE pins and the unreleased quick fasten clips , for an easy and safe gratings installation.
3. The inner surface guarantees an high roughness index and do not have any external passing hole in order to avoid and water infiltration.

Watertight: To ensure the watertight of the channels, it is advisable to use an adhesive bituminous sealing. As a complete and long lasting guarantee of absence of leakages through the joints of the channels, it is possible to hot-solder the joints

Data Sheet

Dimensions and features

N.B. Dimensions and weights are subjected to the normal tolerances of the manufacturing

| | |
|-------------------------------------|---|
| Length (mm) | 1000 |
| External width (mm) | 208 |
| External high (mm) | 101 |
| Internal width (mm) | 150 |
| Internal high (mm) | 40 |
| Outlets | 1 x Ø100 - 2 x Ø50 |
| Material | HD-PE |
| Material Edge | Galvanized or stainless steel (thickness 2mm) |
| Weight (Kg) | 4.70 |
| Drainage section (cm ²) | 56.5 |
| Capacity (dm ³ = litres) | 5.65 |

Gratings

| | | |
|--------------|-----------------------------|---------------------------|
| Mesh 33x33 | galvanized, stainless steel | Class B125-C250 |
| Mesh 33x15 | galvanized, stainless steel | Class B125-C250 |
| Slot 20 mm | ductile iron | Class C250-D400-E600-F900 |
| Closed cover | galvanized | Class C250 |
| Closed cover | ductile iron | Class E600 |
| Air System* | ductile iron | Class E600 |

*Cover for Composting

The products have to be installed according to MufleSystem srl specifications (available on our web site)