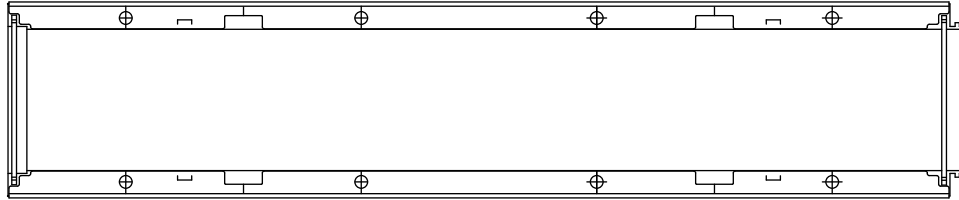


### Channel in HD-PE WING 150/40 with galvanized or stainless steel edge

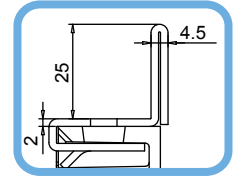


Code  
Galvanized 503008  
Stainless Steel 503009

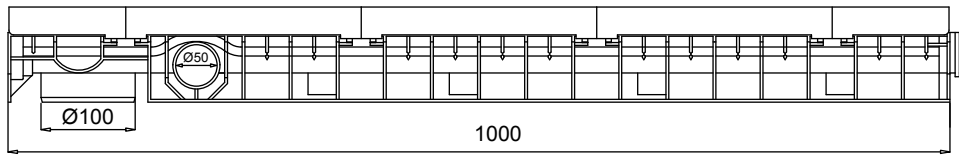
rev. 00



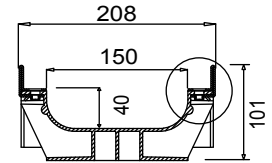
TOP VIEW



DETAIL SECTION



FRONT VIEW



LATERAL VIEW

### New.

1. The new mufledrain channels can also be joined together with the gratings/covers already installed on in order to reduce installation times.
2. The new mufledrain channels have new fixing-to-channels systems, as the inner side HD-PE pins and the unreleased quick fasten clips , for an easy and safe gratings installation.
3. The inner surface guarantees an high roughness index and do not have any external passing hole in order to avoid and water infiltration.

**Watertight:** To ensure the watertight of the channels, it is advisable to use an adhesive bituminous sealing. As a complete and long lasting guarantee of absence of leakages through the joints of the channels, it is possible to hot-solder the joints

## Data Sheet

### Dimensions and features

N.B. Dimensions and weights are subjected to the normal tolerances of the manufacturing

Length (mm)	1000
External width (mm)	208
External high (mm)	101
Internal width (mm)	150
Internal high (mm)	40
Outlets	1 x Ø100 - 2 x Ø50
Material	HD-PE
Material Edge	Galvanized or stainless steel (thickness 2mm)
Weight (Kg)	4.70
Drainage section (cm <sup>2</sup> )	56.5
Capacity (dm <sup>3</sup> = litres)	5.65

### Gratings

Mesh 33x33	galvanized, stainless steel	Class B125-C250
Mesh 33x15	galvanized, stainless steel	Class B125-C250
Slot 20 mm	ductile iron	Class C250-D400-E600-F900
Closed cover	galvanized	Class C250
Closed cover	ductile iron	Class E600
Air System*	ductile iron	Class E600

\*Cover for Composting

The products have to be installed according to MufleSystem srl specifications (available on our web site)

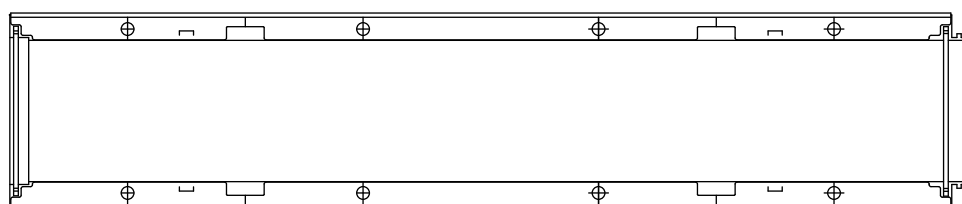
**MUFLEDRAIN****WING****MUFLE**

SISTEMI DI CONDUZIONE DI ACQUA E LUCE

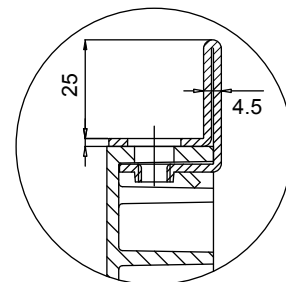
IGQ P026  
UNI EN 1433Codice prodotto  
503008 zincato  
503009 (inox)

rev. 00

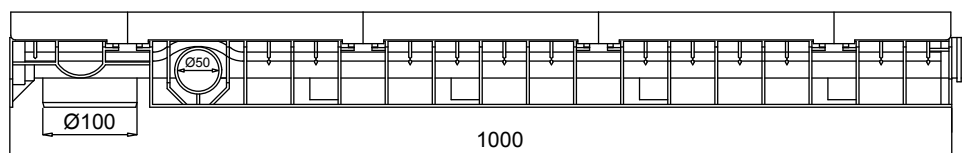
## Canaletta in PE-HD WING 150/40 con telaio in acciaio zincato (o inox)



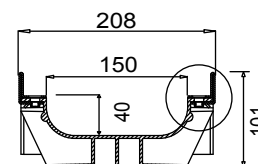
VISTA DALL'ALTO



PART. SEZIONE



VISTA FRONTALE



VISTA LATERALE

Il prodotto deve essere posto in opera secondo le specifiche della Mufle SpA, le istruzioni sono disponibili sul nostro sito internet.

Tenuta all'acqua: per assicurare la tenuta stagna delle canalette, si consiglia l'utilizzo di un adesivo sigillante bituminoso. A garanzia completa e duratura dell'assenza di perdite attraverso i giunti delle canalette, si può provvedere alla saldatura a caldo dei giunti stessi.

### Scheda tecnica

## Dimensioni e caratteristiche

NB: Le dimensioni ed i pesi sono soggetti alle normali tolleranze di fabbricazione

Lunghezza (mm)	1000
Larghezza esterna (mm)	208
Altezza esterna (mm)	101
Luce interna (mm)	150
Altezza interna (mm)	40
Scarichi	1 x Ø 100 e 2 x Ø 50
Materiale canaletta	PE-HD
Materiale telaio	Acciaio zincato (o inox) (spessore 2mm)
Peso (Kg)	4.70
Sezione di drenaggio (cmq)	56.5
Capacità (dm <sup>3</sup> = litri)	5.65

## Griglie

Maglia guarda 30x30	in acciaio zincato, inox	Classe B125-C250
Maglia antitacco 30x10	in acciaio zincato, inox	Classe B125-C250
Fessura 20 mm	in ghisa sferoidale	Classe C250-D400-E600-F900
Copertura cieca	in acciaio zincato	Classe C250
Copertura cieca	in ghisa sferoidale	Classe E600
Air System*	in ghisa sferoidale	Classe E600

\*copertura per compostaggio