

**MUFLE DRAIN****SMART****MUFLE**  
SISTEMI DI DRENAGGIO ACQUAIGQ P026  
UNI EN 1433

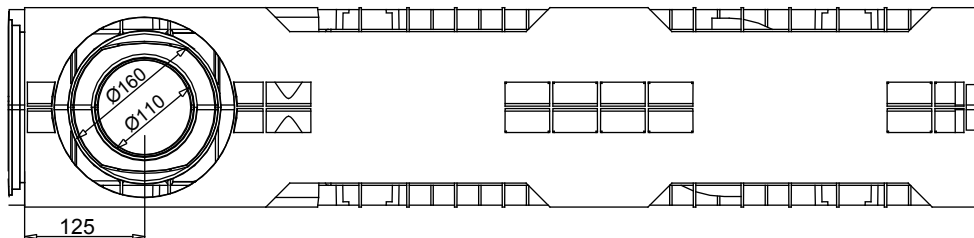
Codice prodotto

701004

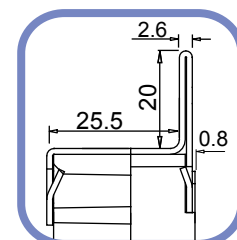
Inox 701012

rev. 00

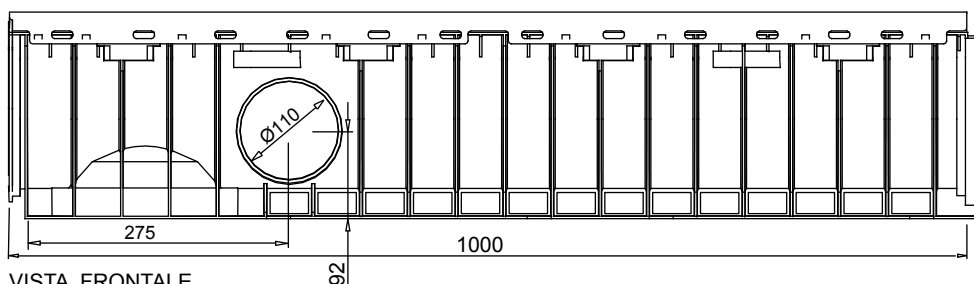
## Canaletta in PE-HD SMART 150/160



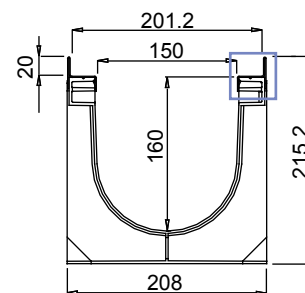
VISTA DAL BASSO



PART. VISTA LATERALE



VISTA FRONTALE



VISTA LATERALE

Tenuta all'acqua: per assicurare la tenuta stagna delle canalette, si consiglia l'utilizzo di un adesivo sigillante bituminoso. A garanzia completa e duratura dell'assenza di perdite attraverso i giunti delle canalette, si può provvedere alla saldatura a caldo dei giunti stessi.

## Scheda tecnica

### Dimensioni e caratteristiche

NB: Le dimensioni ed i pesi sono soggetti alle normali tolleranze di fabbricazione

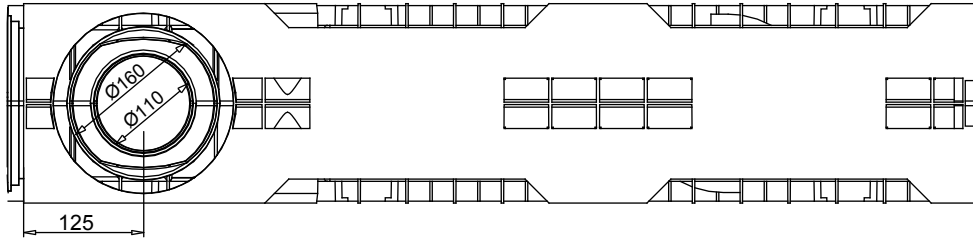
|                            |   |
|----------------------------|---|
| Lunghezza (mm)             | 1000                                      |
| Larghezza esterna (mm)     | 208                                       |
| Altezza esterna (mm)       | 215                                       |
| Larghezza interna (mm)     | 150                                       |
| Altezza interna (mm)       | 160                                       |
| Scarichi                   | 3 x Ø110 e 1 x Ø160                       |
| Materiale canalette        | PE-HD                                     |
| Materiale telaio           | Acciaio zincato (o inox) (spessore 1.2mm) |
| Peso (Kg)                  | 4.55                                      |
| Sezione di drenaggio (cmq) | 213.04                                    |
| Capacità (dm³=litri)       | 21.30                                     |

### Griglie

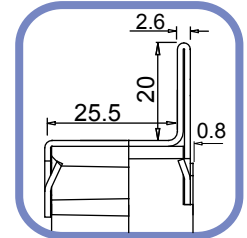
|                        |                          |                  |
|------------------------|--------------------------|------------------|
| Maglia quadra 33x33    | In acciaio zincato, inox | Classe B125-C250 |
| Maglia antitacco 33x15 | In acciaio zincato, inox | Classe B125-C250 |
| Maglia                 | in ghisa sferoidale      | Classe B125      |
| Fessura 20 mm          | in ghisa sferoidale      | Classe C250-D400 |
| Fessura 7 mm           | in ghisa sferoidale      | Classe C250      |

Il prodotto deve essere posto in opera secondo le specifiche della MufleSystem srl, le istruzioni sono disponibili sul nostro sito internet.

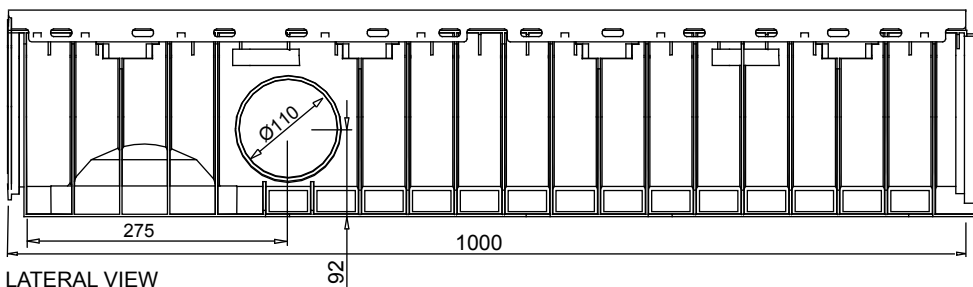
## Channel in HD-PE SMART 150/160 NEW



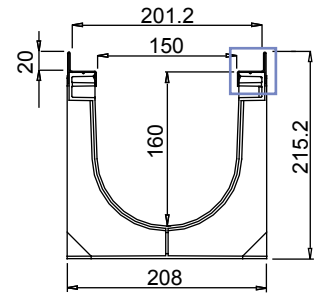
BOTTOM VIEW



DETAIL FRONT VIEW



LATERAL VIEW



FRONT VIEW

### New.

1. The new mufledrain channels can be joined together with the gratings/covers already installed on in order to reduce installation times.
2. The new mufledrain channels have new fixing-to-channels systems, as the inner side HD-PE pins and the unreleased quick fasten clips, for an easy and safe gratings installation.
3. The inner surface guarantees an high roughness index and do not have any external passing hole in order to avoid and water infiltration.

**Watertight:** To ensure the watertight of the channels, it is advisable to use an adhesive bituminous sealing. As a complete and long lasting guarantee of absence of leakages through the joints of the channels, it is possible to hot-solder the joints

## Data Sheet

### Dimensions and features

N.B. Dimensions and weights are subjected to the normal tolerances of the manufacturing

|                                     |  |
|-------------------------------------|--|
| Length (mm)                         | 1000   |
| External width (mm)                 | 208  |
| External high (mm)                  | 215  |
| Internal width (mm)                 | 150  |
| Internal high (mm)                  | 160  |
| Outlets                             | 3 x Ø110 - 1 x Ø160                              |
| Material                            | HD-PE  |
| Material Edge                       | Galvanized or stainless steel (thickness 1.2 mm) |
| Weight (Kg)                         | 4.55   |
| Drainage section (cm <sup>2</sup> ) | 213.04   |
| Capacity (dm <sup>3</sup> = litres) | 21.30  |

### Gratings

|            |                             |                 |
|------------|-----------------------------|-----------------|
| Mesh 33x33 | galvanized, stainless steel | Class B125-C250 |
| Mesh 33x15 | galvanized, stainless steel | Class B125-C250 |
| Mesh       | ductile iron                | Class B125      |
| Slot 20mm  | ductile iron                | Class C250-D400 |
| Slot 7mm   | ductile iron                | Class C250      |

The products have to be installed according to MufleSystem's specifications (available on our web site)