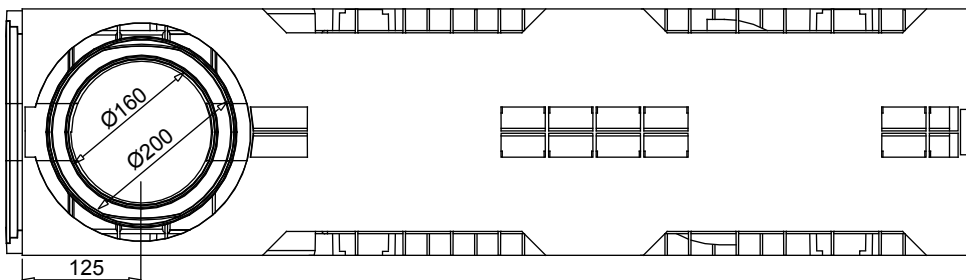
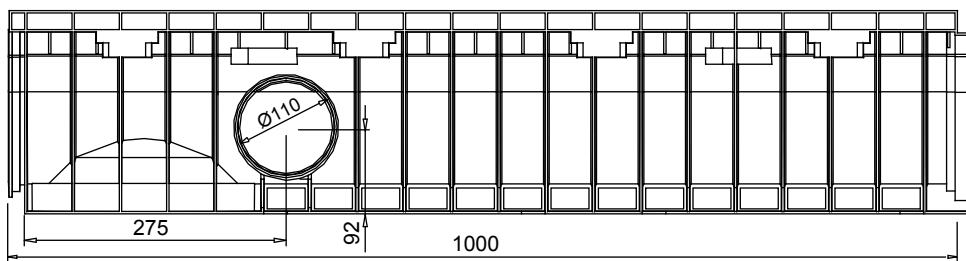


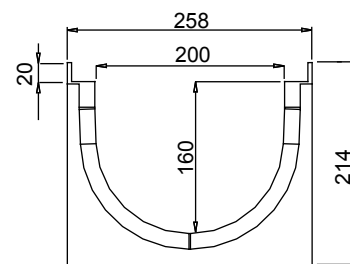
## Canaletta in PE-HD VIP<sub>20</sub> 200/160 NEW



VISTA DAL BASSO



VISTA LATERALE



VISTA FRONTALE

Tenuta all'acqua: per assicurare la tenuta stagna delle canalette, si consiglia l'utilizzo di un adesivo sigillante bituminoso. A garanzia completa e duratura dell'assenza di perdite attraverso i giunti delle canalette, si può provvedere alla saldatura a caldo dei giunti stessi.

## Scheda tecnica

### Dimensioni e caratteristiche

NB: Le dimensioni ed i pesi sono soggetti alle normali tolleranze di fabbricazione

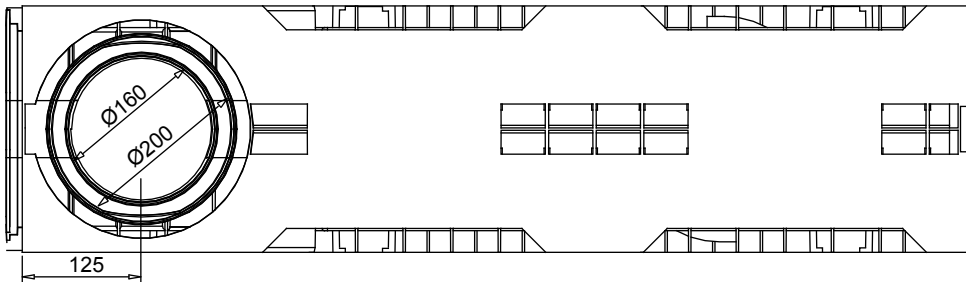
Lunghezza (mm)	1000
Larghezza esterna (mm)	258
Altezza esterna (mm)	214
Larghezza interna (mm)	200
Altezza interna (mm)	160
Scarichi	2 x Ø110, 1 x Ø160 e 1 x Ø200
Materiale	PE-HD
Peso (Kg)	3.40
Sezione di drenaggio (cmq)	275.87
Capacità (dm <sup>3</sup> =litri)	27.58

### Griglie

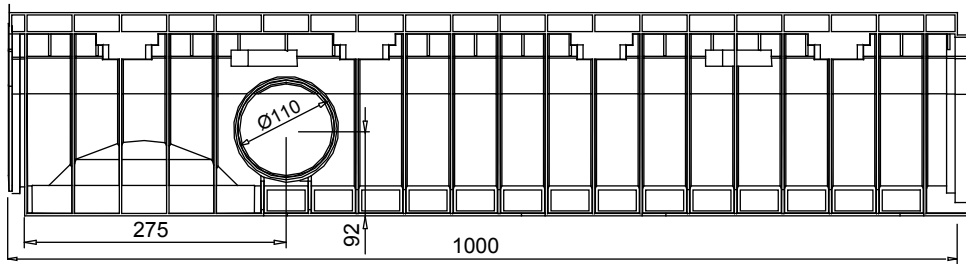
Pioli	in acciaio zincato, inox	Classe A15
Maglia quadra 33x33	In acciaio zincato, inox	Classe B125-C250
Maglia antitacco 33x15	In acciaio zincato, inox	Classe B125-C250
Maglia	in ghisa sferoidale	Classe B125
Fessura 20 mm.	in ghisa sferoidale	Classe C250-D400
Ecovip	Polietilene alta densità	Carrabile
Copertura cieca	Polietilene alta densità	Carrabile

Il prodotto deve essere posto in opera secondo le specifiche della MufleSystem s.r.l., le istruzioni sono disponibili sul nostro sito internet.

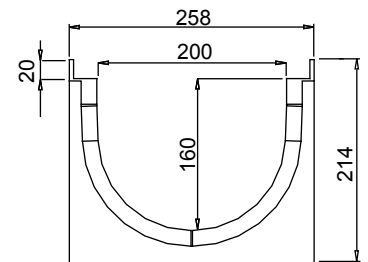
## Channel in HD-PE VIP<sub>20</sub> 200/160 NEW



BOTTOM VIEW



FRONTAL VIEW



LATERAL VIEW

### New.

1. The new mufledrain channels can also be joined together with the gratings/covers already installed on in order to reduce installation times.
2. The new mufledrain channels have new fixing-to-channels systems, as the inner side HD-PE pins and the unreleased quick fasten clips, for an easy and safe gratings installation.
3. The inner surface guarantees an high roughness index and do not have any external passing hole in order to avoid and water infiltration.

Watertight: To ensure the watertight of the channels, it is advisable to use an adhesive bituminous sealing. As a complete and long lasting guarantee of absence of leakages through the joints of the channels, it is possible to hot-solder the joints

## Data Sheet

### Dimensions and features

N.B. Dimensions and weights are subjected to the normal tolerances of the manufacturing

Length (mm)	1000
External width (mm)	258
External high (mm)	214
Internal width (mm)	200
Internal high (mm)	160
Outlets	2 x Ø110 - 1 x Ø160 - 1 x Ø200
Material	HD-PE
Weight (Kg)	3.40
Drainage section (cm <sup>2</sup> )	275.87
Capacity (dm <sup>3</sup> = litres)	27.58

## Gratings

Slotted	galvanized, stainless steel	Class A15
Mesh 33x33	galvanized, stainless steel	Class B125-C250
Mesh 33x15	galvanized, stainless steel	Class B125-C250
Mesh	ductile iron	Class B125-C250
Slot 20 mm	ductile iron	Class C250
Longitudinal slot "L"	galvanized, stainless steel	Class from A15 to C250
Ecovip	HD-PE	Driveway
Closed cover	HD-PE	Driveway

The products have to be installed according to MufleSystem's specifications (available on our web site)