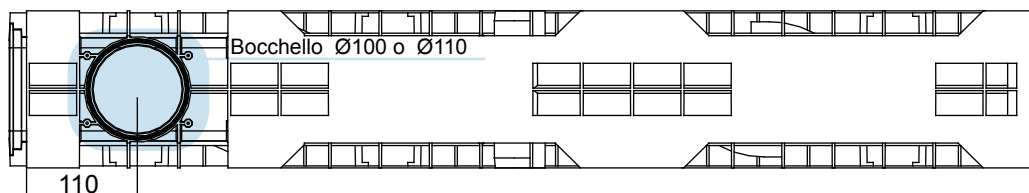
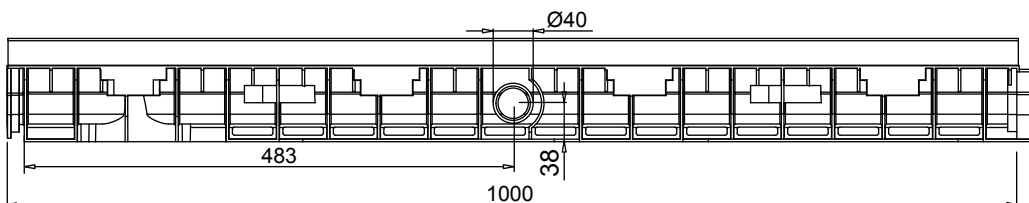


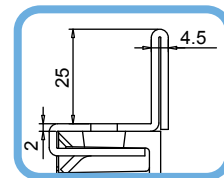
Canaletta in PE-HD WING 100/55 con telaio in acciaio zincato (o inox)



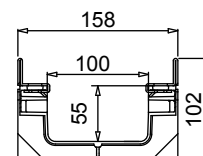
VISTA DAL BASSO



VISTA LATERALE



PART. SEZIONE



SEZIONE

Tenuta all'acqua: per assicurare la tenuta stagna delle canalette, si consiglia l'utilizzo di un adesivo sigillante bituminoso. A garanzia completa e duratura dell'assenza di perdite attraverso i giunti delle canalette, si può provvedere alla saldatura a caldo dei giunti stessi.

Scheda Tecnica

Dimensioni e caratteristiche

NB: Le dimensioni ed i pesi sono soggetti alle normali tolleranze di fabbricazione

| | |
|-----------------------------------------|-----------------------------------------|
| Lunghezza (mm) | 1000 |
| Larghezza esterna (mm) | 158 |
| Altezza esterna (mm) | 102 |
| Luce interna (mm) | 100 |
| Altezza interna (mm) | 55 |
| Scarichi | 1 x Ø100*/Ø110 e 2 x Ø40 |
| Materiale canaletta | PE-HD |
| Materiale telaio | Acciaio zincato (o inox) (spessore 2mm) |
| Peso (Kg) | 3.90 |
| Sezione di drenaggio (cm ²) | 54.44 |
| Capacità (dm ³ = litri) | 5.44 |

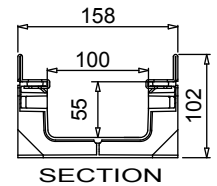
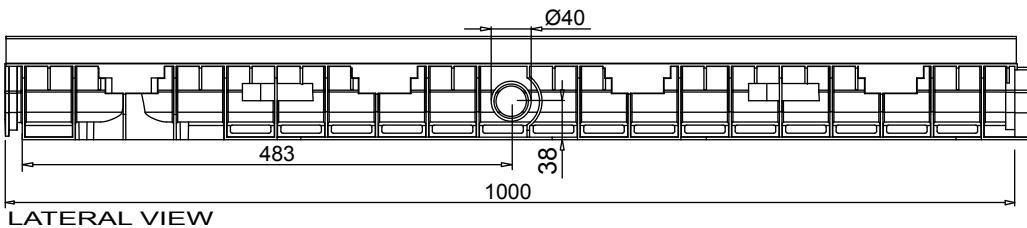
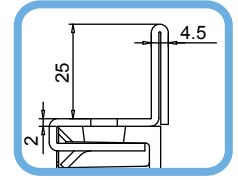
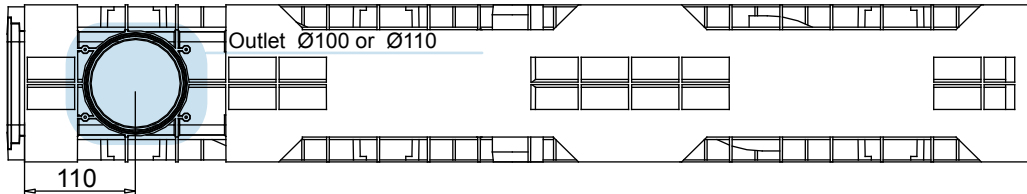
*Per ottenere lo scarico occorre utilizzare il Kit Bocchello con uscita (disponibile nelle due versioni da Ø100 o Ø110).

Griglie

| | | |
|-----------------------------|--------------------------|----------------------------|
| Maglia quadra 30x30 | In acciaio zincato, inox | Classe C250 |
| Maglia antitacco 30x10 | In acciaio zincato, inox | Classe C250 |
| Fessura 20 mm | In ghisa sferoidale | Classe C250-D400-E600-F900 |
| Maglia quadra | In ghisa sferoidale | Classe D400 |
| Fessura 6 mm | In ghisa sferoidale | Classe E600 |
| Copertura cieca | In acciaio zincato | Classe C250 |
| Copertura cieca | In ghisa sferoidale | Classe E600 |
| Fessura longitudinale "L/T" | In acciaio zincato, inox | Classe da B125 a D400 |

Il prodotto deve essere posto in opera secondo le specifiche della MufleSystem srl, le istruzioni sono disponibili sul nostro sito internet.

Channel in HD-PE WING 100/55 with galvanized or stainless steel edge



New.

1. The new mufledrain channels can also be joined together with the gratings/covers already installed on in order to reduce installation times.
2. The new mufledrain channels have new fixing-to-channels systems, as the inner side HD-PE pins and the unreleased quick fasten clips, for an easy and safe gratings installation.
3. The inner surface guarantees a high roughness index and do not have any external passing hole in order to avoid and water infiltration.

Watertight: To ensure the watertight of the channels, it is advisable to use an adhesive bituminous sealing. As a complete and long lasting guarantee of absence of leakages through the joints of the channels, it is possible to hot-solder the joints

Data Sheet

Dimensions and features

N.B. Dimensions and weights are subjected to the normal tolerances of the manufacturing

| | |
|-------------------------------------|-----------------------------------------------|
| Length (mm) | 1000 |
| External width (mm) | 158 |
| External high (mm) | 102 |
| Internal width (mm) | 100 |
| Internal high (mm) | 55 |
| Outlets | 1 x Ø100*/Ø110 - 2 x Ø40 |
| Material | HD-PE |
| Material Edge | Galvanized or stainless steel (thickness 2mm) |
| Weight (Kg) | 3.90 |
| Drainage section (cm ²) | 54.44 |
| Capacity (dm ³ = litres) | 5.44 |

*For drainage purposes use the drain gate with outlet kit (available in two versions Ø100 and Ø110).

Gratings

| | | |
|-------------------------|-----------------------------|---------------------------|
| Mesh 33x33 | galvanized, stainless steel | Class C250 |
| Mesh 33x15 | galvanized, stainless steel | Class C250 |
| Slot 20 mm | ductile iron | Class C250-D400-E600-F900 |
| Mesh | ductile iron | Class D400 |
| Slot 6 mm | ductile iron | Class E600 |
| Closed cover | galvanized | Class C250 |
| Closed cover | ductile iron | Class E600 |
| Longitudinal Slot "L/T" | galvanized, stainless steel | Class D400 |

The products have to be installed according to MufleSystem's specifications (available on our web site)