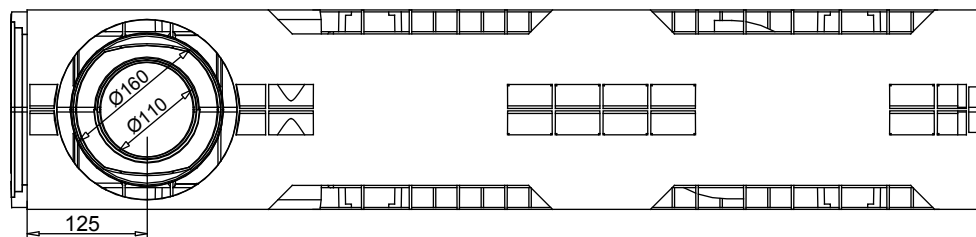


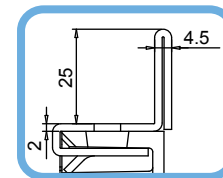
**MUFLEDRAIN****WING****MUFLE**  
SISTEMI DI DRENAGGIO ACQUACodice prodotto  
703005 acc. zincato  
703013 (inox)

rev. 00

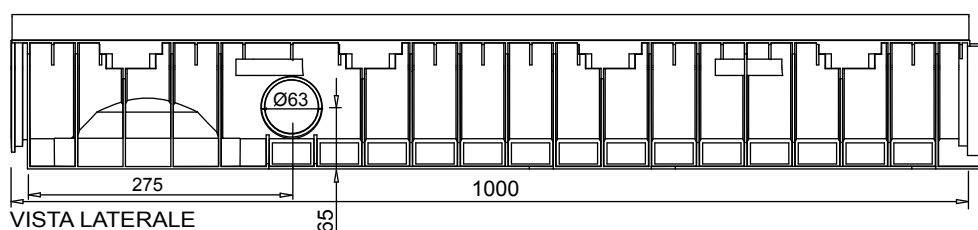
## Canaletta in PE-HD WING 150/100 con telaio in acciaio zincato (o inox)



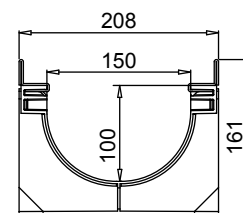
VISTA DAL BASSO



PART. SEZIONE



VISTA LATERALE



SEZIONE

Tenuta all'acqua: per assicurare la tenuta stagna delle canalette, si consiglia l'utilizzo di un adesivo sigillante bituminoso. A garanzia completa e duratura dell'assenza di perdite attraverso i giunti delle canalette, si può provvedere alla saldatura a caldo dei giunti stessi.

## Scheda Tecnica

### Dimensioni e caratteristiche

NB: Le dimensioni ed i pesi sono soggetti alle normali tolleranze di fabbricazione

|   |   |
|---|---|
| Lunghezza (mm)                          | 1000                                    |
| Larghezza esterna (mm)                  | 208                                     |
| Altezza esterna (mm)                    | 161                                     |
| Luce interna (mm)                       | 150                                     |
| Altezza interna (mm)                    | 100                                     |
| Scarichi                                | 1 x Ø110 e 1 x Ø160 e 2 x Ø63           |
| Materiale canaletta                     | PE-HD                                   |
| Materiale telaio                        | Acciaio zincato (o inox) (spessore 2mm) |
| Peso (Kg)                               | 4.80                                    |
| Sezione di drenaggio (cm <sup>2</sup> ) | 127.32                                  |
| Capacità (dm <sup>3</sup> = litri)      | 12.73                                   |

### Griglie

|                             |                          |                            |
|-----------------------------|--------------------------|----------------------------|
| Maglia guarda 30x30         | in acciaio zincato, inox | Classe C250                |
| Maglia antitacco 30x10      | in acciaio zincato, inox | Classe C250                |
| Fessura 20 mm               | in ghisa sferoidale      | Classe C250-D400-E600-F900 |
| Maglia quadra               | in ghisa sferoidale      | Classe D400                |
| Copertura cieca             | in acciaio zincato       | Classe C250                |
| Copertura cieca             | in ghisa sferoidale      | Classe E600                |
| Air System*                 | in ghisa sferoidale      | Classe E600                |
| Fessura longitudinale "L/T" | in acciaio zincato, inox | Classe da B125 a D400      |
| *copertura per compostaggio |                          |                            |

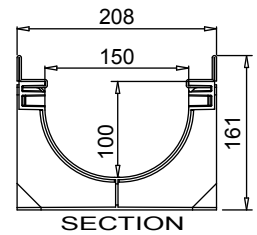
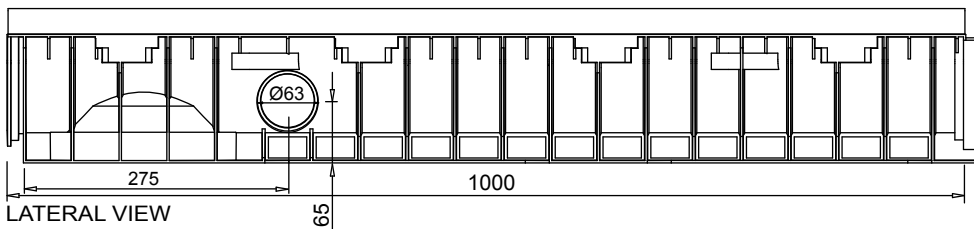
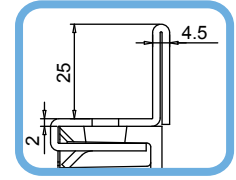
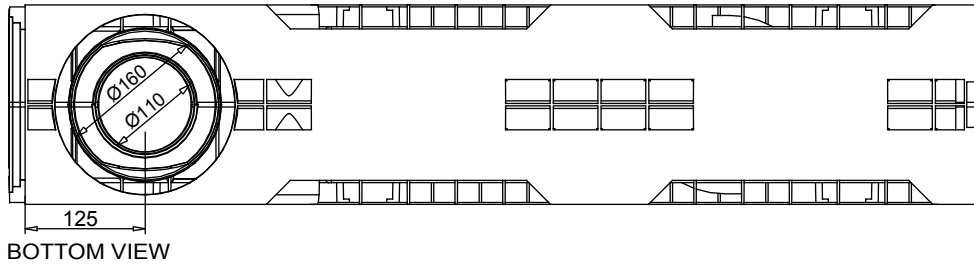
Il prodotto deve essere posto in opera secondo le specifiche della MufleSystem srl, le istruzioni sono disponibili sul nostro sito internet.

### Channel in HD-PE WING 150/100 with galvanized or stainless steel edge



Code  
Galvanized 703005  
Stainless Steel 703013

rev. 00



#### New.

1. The new mufledrain channels can also be joined together with the gratings/covers already installed on in order to reduce installation times.
2. The new mufledrain channels have new fixing-to-channels systems, as the inner side HD-PE pins and the unreleased quick fasten clips , for an easy and safe gratings installation.
3. The inner surface guarantees an high roughness index and do not have any external passing hole in order to avoid and water infiltration.

Watertight: To ensure the watertight of the channels, it is advisable to use an adhesive bituminous sealing. As a complete and long lasting guarantee of absence of leakages through the joints of the channels, it is possible to hot-solder the joints

## Data Sheet

### Dimensions and features

N.B. Dimensions and weights are subjected to the normal tolerances of the manufacturing

|                                     |   |
|-------------------------------------|---|
| Length (mm)                         | 1000  |
| External width (mm)                 | 208   |
| External high (mm)                  | 161   |
| Internal width (mm)                 | 150   |
| Internal high (mm)                  | 100   |
| Outlets                             | 1 x Ø110 - 1 x Ø160 - 2 x Ø63                 |
| Material                            | HD-PE   |
| Material Edge                       | Galvanized or stainless steel (thickness 2mm) |
| Weight (Kg)                         | 4.80  |
| Drainage section (cm <sup>2</sup> ) | 127.32  |
| Capacity (dm <sup>3</sup> = litres) | 12.73   |

### Gratings

|                         |                             |                           |
|-------------------------|-----------------------------|---------------------------|
| Mesh 33x33              | galvanized, stainless steel | Class C250                |
| Mesh 33x15              | galvanized, stainless steel | Class C250                |
| Slot 20 mm              | ductile iron                | Class C250-D400-E600-F900 |
| Mesh                    | ductile iron                | Class D400                |
| Closed cover            | galvanized                  | Class C250                |
| Closed cover            | ductile iron                | Class E600                |
| Air System*             | ductile iron                | Class E600                |
| Longitudinal Slot "L/T" | galvanized, stainless steel | Class D400                |

\*Cover for Composting

The products have to be installed according to Muflesystem's specifications (available on our web site)